



— "Education as Service" —

# VASANT KANYA MAHAVIDYALAYA

(Admitted to the Privileges of Banaras Hindu University)



Established in 1954

📍 Kamachha, Varanasi – 221010



## POSTGRADUATE ADMISSION 2026-27

*Empowering Minds.  
Enriching Values.  
Shaping Futures.*

Admissions Through **CUET-PG** as per BHU guidelines

### POSTGRADUATE PROGRAMMES OFFERED

### WHY CHOOSE VKM?

- |                         |                        |
|-------------------------|------------------------|
| M.A. Hindi              | M.A. Home Science      |
| M.A. English            | M.A. Economics         |
| M.A. Sanskrit           | M.A. Psychology        |
| M.A. AIHC & Archaeology | M.A. Sociology         |
| M.A. Philosophy         | M.A. Political Science |
|                         | M.A. History           |

- 70+ Years of Academic Excellence
- Experienced Faculty & Personal Mentoring
- Research & Scholarly Learning Environment
- Rich Cultural, Literary & Academic Heritage
- Residential Facility in the Theosophical Society Campus
- Safe, Green & Women-Centric Learning Environment

### CAMPUS HIGHLIGHTS

- |                                 |                       |              |              |                  |                     |                 |                  |                                   |  |
|---------------------------------|-----------------------|--------------|--------------|------------------|---------------------|-----------------|------------------|-----------------------------------|--|
| Heritage Institution Since 1954 | Well-Equipped Library | Wi-Fi Campus | Computer Lab | Smart Classrooms | Open Air Classrooms | Yoga & Wellness | Hygienic Canteen | Sports & Co-curricular Activities | Cultural Festivals & Student Societies |
|---------------------------------|-----------------------|--------------|--------------|------------------|---------------------|-----------------|------------------|-----------------------------------|--|



ACADEMICS



CULTURAL ACTIVITIES



RESEARCH & LEARNING



GREEN CAMPUS



SPORTS

## APPLY THROUGH CUET-PG

<https://bhu.ac.in/cuet-pg>

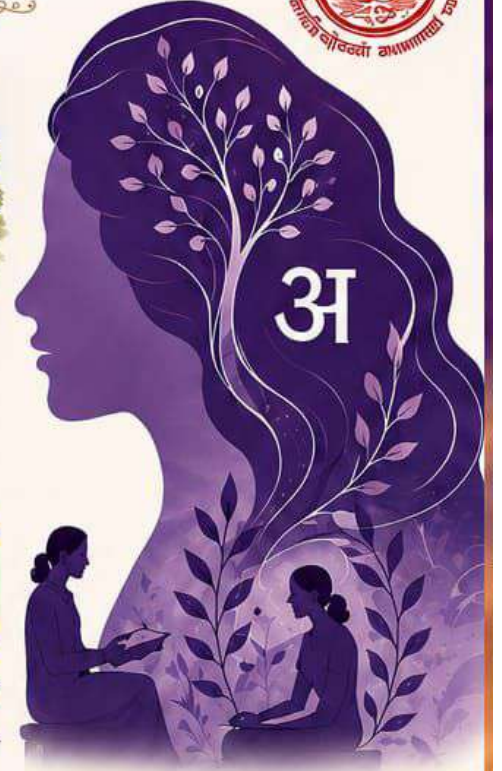
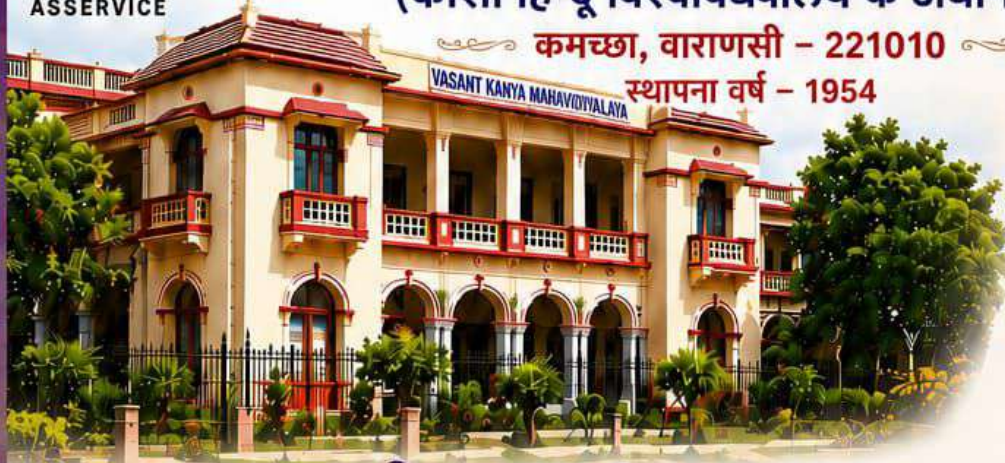


# वसंत कन्या महाविद्यालय

(काशी हिन्दू विश्वविद्यालय के अधीनस्थ)

कमछा, वाराणसी - 221010

स्थापना वर्ष - 1954



## प्रवेश प्रारंभ

# एम.ए. हिन्दी (2026-27)

भविष्य के शिक्षाविद, शोधकर्ता और साहित्य साधकों के लिए उत्कृष्ट अवसर



### एम.ए. हिन्दी क्यों चुनें?

हिन्दी केवल भाषा नहीं, विचार, संवेदना और संस्कृति का सेतु है, जो जीवन, समाज और सृजन को दिशा देती है।

- ✓ हिन्दी साहित्य, भाषा-विज्ञान, समाजशास्त्र और अनुवाद अध्ययन का गहन व समृद्ध पाठ्यक्रम
- ✓ राष्ट्रीय शिक्षा नीति, मीडिया, प्रकाशन, सिविल सेवा एवं अनुसंधान के लिए सशक्त आधार
- ✓ व्यक्तित्व विकास, संप्रेषण कौशल, आलोचनात्मक चिंतन, नैतिक मूल्यों व सृजनात्मक लेखन पर विशेष बल
- ✓ समकालीन विमर्शों और राष्ट्रीय आक्यता के साथ जुड़ा उन्नव शैक्षणिक वातावरण



### शोध एवं शैक्षणिक गतिविधियाँ

- ✓ सेमिनार, कार्यशालाएँ एवं व्याख्यान श्रृंखलाएँ
- ✓ शोध परियोजनाएँ एवं क्षेत्र-कार्य
- ✓ पुस्तक समीक्षा एवं साहित्यिक गोष्ठियाँ
- ✓ साहित्यिक एवं सांस्कृतिक कार्यक्रम
- ✓ डिजिटल लर्निंग एवं ई-रिसोर्स उपलब्ध
- ✓ अनुभवी एवं विशेषज्ञ फैकल्टी मार्गदर्शन



### करियर के अवसर

- ✓ शिक्षण एवं व्याख्यान
- ✓ अनुसंधान एवं अकादमिक करियर
- ✓ लेखन एवं संपादन
- ✓ मीडिया एवं पत्रकारिता
- ✓ प्रकाशन एवं कंटेंट डेवलपमेंट
- ✓ अनुवादक एवं भाषा विशेषज्ञ
- ✓ सिविल सेवा एवं प्रतियोगी परीक्षाएँ
- ✓ कॉर्पोरेट एवं जनसंपर्क क्षेत्र
- ✓ पीएच.डी. एवं उच्च अध्ययन

### विशेष विशेषताएँ



हिन्दी साहित्य का इतिहास



आधुनिक हिन्दी साहित्य



भाषा-विज्ञान एवं हिन्दी भाषा



हिन्दी समालोचना



अनुवाद अध्ययन



लोक साहित्य एवं लोक संस्कृति



स्त्री लेखन अध्ययन



मीडिया एवं संप्रेषण हिन्दी



सृजनात्मक लेखन



शोध पद्धति एवं परियोजना कार्य



### अनुभवी एवं समर्पित संकाय सदस्य

- ◆ प्रोफेसर आशा यादव
- ◆ प्रोफेसर सपना भूषण
- ◆ प्रोफेसर शशिकला
- ◆ डॉक्टर शुभांगी श्रीवास्तव



### छात्रावास सुविधा उपलब्ध

वियोसोफिकल सोसाइटी परिसर में सुरक्षित व अनुकूल वातावरण महिला विद्यार्थियों के लिए उत्तम व्यवस्था



### विशिष्ट पूर्व छात्राएँ

हमारी पूर्व छात्राएँ विभिन्न क्षेत्रों में कर रही हैं उत्कृष्ट कार्य

- प्रोफेसर एवं शिक्षक
- शोधकर्ता एवं विद्वानी
- पत्रकार एवं लेखिका
- सिविल सेवाओं एवं प्रशासनिक अधिकारी
- मीडिया कर्मी हैं एवं साहित्यकार
- सामाजिक कठिनाई एवं साहित्यकार



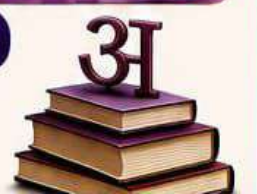
### प्रवेश प्रक्रिया (CUET-PG के माध्यम से)

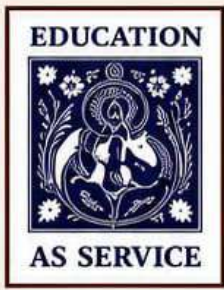
- प्रवेश संवेची जानकारी
- विस्तृत विवरण वेबसाइट देखें



<https://bhucuetpg.samarth.edu.in/>

शब्द से संस्कृति, संस्कृति से सृजन, सृजन से समाज





# VASANT KANYA MAHAVIDYALAYA

Admitted to the Privileges of Banaras Hindu University  
(Run by the Indian Section, The Theosophical Society)

Accredited by NAAC



## ADMISSIONS OPEN

# M.A.

in

# ECONOMICS

WITH SPECIALIZATION IN  
**ECONOMETRICS**  
AND  
**INTERNATIONAL BUSINESS**

**SESSION 2026-27**

*Empowering Minds. Enriching Futures.  
Shaping Economists. Building a Better Tomorrow.*

### WHY CHOOSE M.A. ECONOMICS AT VASANT KANYA MAHAVIDYALAYA?

- Experienced and dedicated faculty with academic excellence
- Comprehensive curriculum with strong theoretical and analytical foundation
- Focus on research, data analysis, and contemporary economic issues
- Specializations in Econometrics and International Business for industry-ready expertise
- Based on NEP Curriculum.
- Supportive learning environment for personal and professional growth
- Guidance for academic, research and career opportunities

Hostel facility is available in the Theosophical Society Campus

A Legacy of Excellence in Girl's Education



### ELIGIBILITY

10+2, Graduation with CUET Score  
(As Per Banaras Hindu University norms)



### ADMISSION PROCESS

- Application forms available online
- Merit based admission
- Shortlisted candidates will be notified for counselling

For more details click on  
BHU Admission Website:

<https://bhucuetpg.samarth.edu.in/>



### IMPORTANT DATES

To be Announced

### CONTACT DETAILS

Vasant Kanya Mahavidyalaya  
Kamachha  
Varanasi-221010, Uttar Pradesh, India  
 Phone: 0542-2455382  
 E-mail: [vkmdegree.college@gmail.com](mailto:vkmdegree.college@gmail.com),  
[vasantkanyamahavidyalaya.contact@vkm.ac.in](mailto:vasantkanyamahavidyalaya.contact@vkm.ac.in)  
 College Website: [www.vasantkanyamahavidyalaya.ac.in](http://www.vasantkanyamahavidyalaya.ac.in)

Join a community that inspires,  
empowers and leads.

**BE FUTURE READY.  
BE VERSATILE.**





# VASANT KANYA MAHAVIDYALAYA

## KAMACHHA VARANASI

Admitted to the Privileges of Banaras Hindu University

(Run by the Indian Section, The Theosophical Society)

Accredited by NAAC

ESTABLISHED IN 1954



# Admission OPEN

## M.A. SOCIOLOGY (2026-27)

*Be a part of legacy,  
shape a better society.*



“

*Sociology is the study of  
human relationships and  
social institutions.*

– Max Weber

”

### WHY CHOOSE SOCIOLOGY AT VKM?



**Strong Academic Legacy**  
Established in 1954 with a rich heritage of academic excellence in Sociology.



**Holistic Learning Experience**  
Combines theory with real-world exposure to understand society and bring meaningful change.



**Empowering Future Leaders**  
Equips students with critical thinking, research skills and values to build a just and inclusive society.

### COURSES OFFERED



B.A. IN SOCIOLOGY



M.A. IN SOCIOLOGY



PhD IN SOCIOLOGY

### AREAS OF EXPERTISE

- Rural Sociology
- Urban Sociology
- Social Anthropology
- Gender Studies
- Research Methodology
- Indian and Western Sociological Thinker



### CAREER OPPORTUNITIES

- ▶ Academics & Research
- ▶ Social Research & Policy Organizations
- ▶ NGOs & Development Sector
- ▶ Civil Services & Government Jobs
- ▶ Human Resource & Community Development
- ▶ Media, Journalism & Social Advocacy
- ▶ Counseling & Social Work

### ADMISSION DETAILS



Admission as per  
BHU/ CUET-PG  
guidelines

Website: .....

<https://bhucuetpg.samarth.edu.in/>

### HOSTEL FACILITY AVAILABLE



Hostel facility within the  
Theosophical Society Campus

*A safe, secure and  
comfortable home  
away from home.*



DEPARTMENT CLUB - OCEAN SHELL- A SOCIO AND CULTURAL FORUM

to enhance student creativity and personality.



VKM WEBSITE- [www.vkm.ac.in](http://www.vkm.ac.in)  
for more information

*Learn Society. Understand Life.  
Create a Better Tomorrow.*

FOLLOW US ON





# VASANT KANYA MAHAVIDYALAYA

(Admitted to the Privileges of Banaras Hindu University)

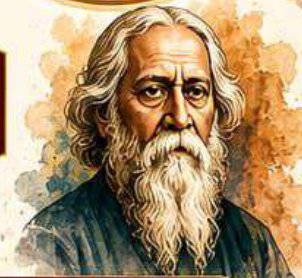
Kamachha, Varanasi – 221010



William Shakespeare



R.K. Narayan



Rabindranath Tagore

Admissions Open

## M.A. ENGLISH (2026-27)

Exploring Literature, Language, and Life Since 1954.



### ABOUT THE DEPARTMENT OF ENGLISH

Established in 1954, the Department of English at Vasant Kanya Mahavidyalaya is committed to academic excellence and holistic student development. Along with providing quality education in literature and language, the department encourages critical thinking, creativity, and real-world learning through lectures, workshops, seminars, and cultural activities. The department strives to create an engaging learning environment that nurtures intellectual growth and communication skills. In line with NEP 2020, it aims to equip students with the knowledge, values, and confidence required for academic, professional, and personal success.



### UGC-RECOMMENDED CERTIFICATE/DIPLOMA COURSE IN SPOKEN ENGLISH

- ✓ Offers a UGC-recommended Certificate/Diploma Course in Spoken English.
- ✓ Enhances students' communication and presentation skills.
- ✓ Focuses on improving grammar, vocabulary, and pronunciation.
- ✓ Prepares learners for academic, professional, and everyday communication.
- ✓ Encourages confidence in spoken and written English.



### LEARNING EXPERIENCE

- ✓ Interactive Lectures & Discussions
- ✓ Seminars, Workshops & Guest Lectures
- ✓ Literary Events & Cultural Activities
- ✓ Research Guidance & Skill Development
- ✓ Digital Learning Resources
- ✓ Focus on Critical Thinking, Creativity and Communication



### CAREER PATHWAYS

- Teaching & Academia
- Content Writing & Editing
- Publishing & Journalism
- Corporate Communication
- Civil Services & Competitive Exams
- Research & Higher Studies
- Creative Writing & Media



### WHY CHOOSE ENGLISH AT VKM?

- Established Department since 1954
- Research-Oriented Learning Environment
- Literary Events, Seminars & Workshops
- UGC-Recommended Spoken English Course
- Focus on Critical Thinking and Communication
- Strong Preparation for Higher Studies and Careers



### HOSTEL FACILITY AVAILABLE

Residential Facility through The Theosophical Society Campus Safe and Supportive Environment for Women Students



### ADMISSION THROUGH CUET-PG



FOR DETAILS:  
[www.vkm.ac.in](http://www.vkm.ac.in)

Explore Minds. Understand Humans. Create Impact.

TOGETHER TOWARDS A BETTER TOMORROW.



# Vasanta Kanya Mahavidyalaya

(Admitted to the Privileges of Banaras Hindu University)

Kamachha, Varanasi – 221001

Established in 1954

## ADMISSIONS OPEN

2026–27

## M.A. IN SANSKRIT



### Why Choose M.A. Sanskrit at VKM?

- ✓ Comprehensive and in-depth study of Sanskrit Grammar, Literature, Philosophy, and Indian Knowledge Systems (IKS)
- ✓ Research-oriented curriculum fostering critical thinking and analytical skills
- ✓ Experienced, dedicated, and highly qualified faculty
- ✓ Academic excellence reflected in outstanding university results and gold medal-winning students
- ✓ Student-friendly, safe, and intellectually stimulating learning environment
- ✓ Regular seminars, workshops, guest lectures, and academic interactions with eminent scholars
- ✓ Opportunities for leadership, communication, and personality development through departmental activities

### Areas of Specialization

- 📖 Vedic Literature
- अ Sanskrit Grammar (Vyākaraṇa)
- 🖋️ Poetics (Kāvyaśāstra)
- 🎭 Dramaturgy (Nāṭyaśāstra)
- ॐ Indian Philosophy
- 📖 Translation Studies & Textual Criticism
- 🌳 Indian Knowledge Systems (IKS)

### Highlights of the Department

- ✓ Strong academic and research culture
- ✓ Classical and Contemporary Sanskrit Studies
- ✓ Training in Research Methodology, Academic Writing, and Presentation Skills
- ✓ Comparative and Interdisciplinary Approaches to Knowledge
- ✓ Sanskrit Conversation and Literary Activities through Vāgvardhini Sabhā (Students' Club)
- ✓ Workshops on the Scientific and Traditional Recitation of Sanskrit Metres
- ✓ Encouragement for participation in conferences, competitions, and cultural programmes
- ✓ Consistent record of academic achievements and university distinctions

### Career Prospects



#### Higher Education & Research

- Ph.D. and Advanced Research
- Teaching in Schools, Colleges, and Universities



#### Government & Competitive Examinations

- Civil Services
- Administrative Services
- Educational Services



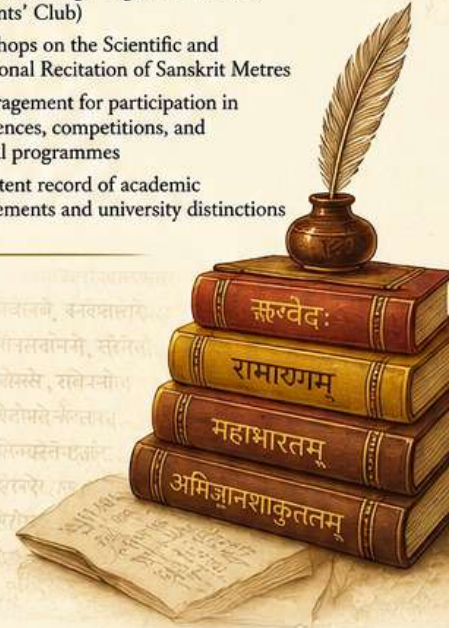
#### Language & Cultural Fields

- Translation and Interpretation
- Manuscriptology and Indology
- Museums, Archives, and Cultural Institutions



#### Media & Content Development

- Journalism and Broadcasting
- Academic Writing and Editing
- Digital Content Creation



### Courses Offered

- B.A. (Sanskrit)
- M.A. (Sanskrit)
- Ph.D. (Sanskrit)



### Vāgvardhini Sabhā (Students' Club)

A dynamic platform for Sanskrit conversation, literary discussions, cultural activities, personality development, and holistic student growth.



### Admission Details

Apply Online:

<https://bhucuetpg.samarth.edu.in>

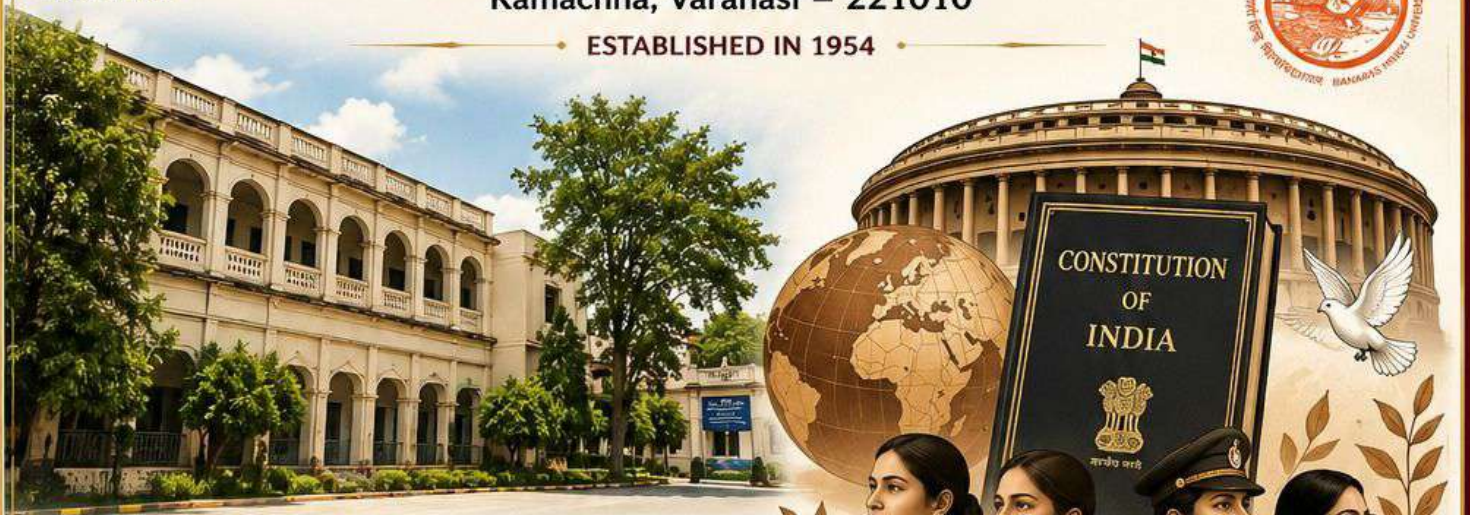


ACADEMIC EXCELLENCE • CULTURAL HERITAGE • RESEARCH INNOVATION

“यदिहास्ति तदन्यत्र यन्नेहास्ति न तत् क्वचित्” -२

Join a vibrant community dedicated to preserving, promoting, and advancing the timeless wisdom of Sanskrit.

“Discover the Wisdom of the Past. Shape the Knowledge of the Future.”



## Admissions Open M.A. POLITICAL SCIENCE (2026–27)

Understanding Politics. Shaping Governance. Leading Change.

### POSTGRADUATE STUDIES UNDER THE PRIVILEGES OF BHU DEPARTMENT OF POLITICAL SCIENCE

The Department of Political Science offers M.A. programme with a rich academic environment and experienced faculty.

#### WHY CHOOSE POLITICAL SCIENCE?



##### ACADEMIC EXCELLENCE

Strong foundation in Political Theory, Indian Government & Politics and Comparative Politics.



##### GLOBAL PERSPECTIVE

Understanding International Relations, Global Politics and contemporary world issues.



##### GOVERNANCE & LEADERSHIP

Preparing students for careers in Civil Services, Public Policy, Politics, NGOs and more.



##### RESEARCH ORIENTATION

Encouraging analytical thinking, research and academic inquiry.



##### WOMEN EMPOWERMENT

Nurturing confident, capable and socially responsible women leaders.



##### CRITICAL THINKING & PUBLIC ENGAGEMENT

Developing informed citizens committed to democracy, justice and social change.

#### WHY VKM?

- ✓ Legacy of Women's Education Since 1954
- ✓ Academic Excellence and Value-Based Education
- ✓ Green and Serene Campus
- ✓ Library and Learning Resources
- ✓ Strong Research Culture
- ✓ Safe Residential Environment
- ✓ Focus on Leadership, Service and Social Responsibility
- ✓ Vibrant Co-curricular and Extension Activities



#### RESIDENTIAL FACILITY AVAILABLE



Hostel facility within the Theosophical Society Campus.

Safe, supportive and academically conducive environment for women students.

#### ADMISSION THROUGH CUET-PG



Admission as per BHU / CUET-PG guidelines



Visit:

[bhucuetpg.samarth.edu.in](http://bhucuetpg.samarth.edu.in)

#### CAREER PATHWAYS

- Civil Services (UPSC / State PCS)
- Public Policy & Governance
- Research & Academia
- International Organizations
- NGOs & Social Sector
- Political Consulting & Analysis
- Media & Journalism

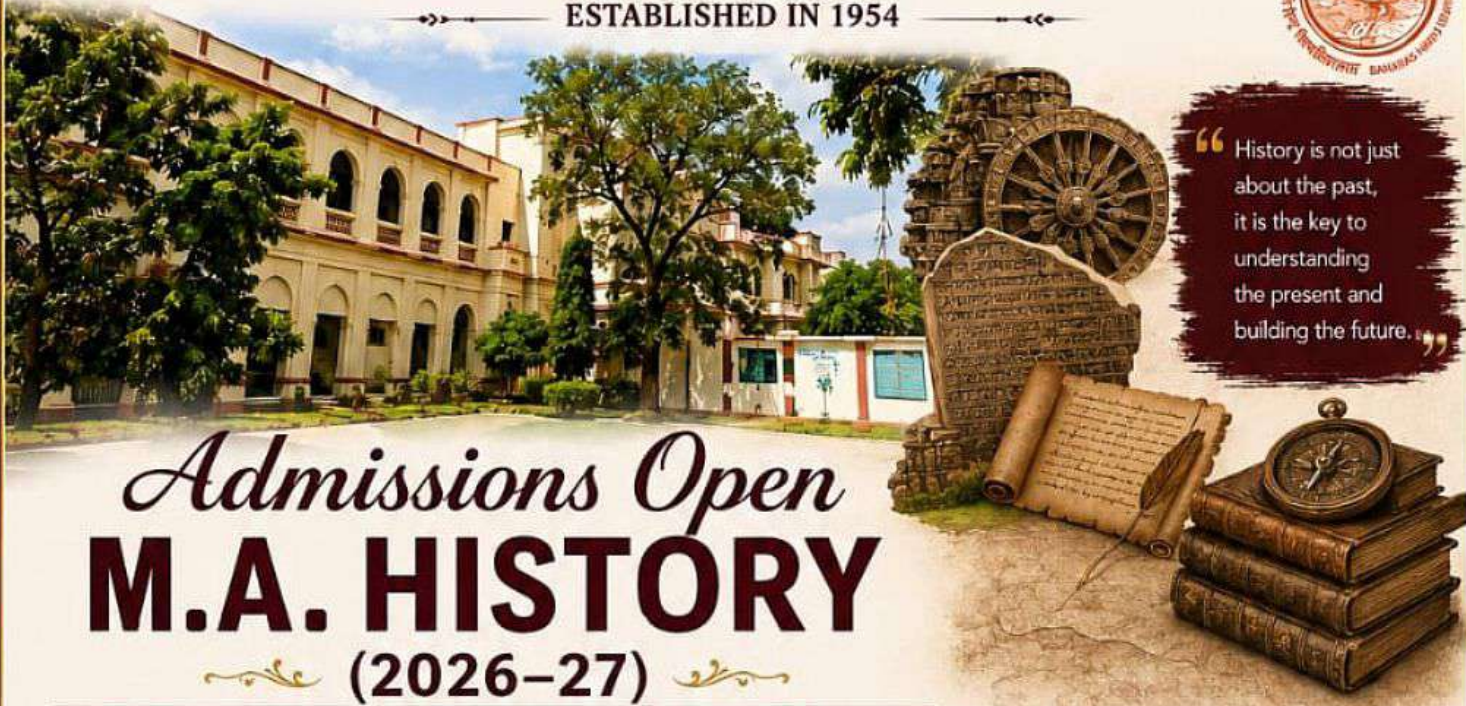


# VASANT KANYA MAHAVIDYALAYA

(Admitted to the Privileges of Banaras Hindu University)

Kamachha, Varanasi – 221010

ESTABLISHED IN 1954



“History is not just about the past, it is the key to understanding the present and building the future.”

## Admissions Open M.A. HISTORY (2026-27)

Explore. Analyze. Interpret. Lead with Knowledge.

### ★ WHY CHOOSE HISTORY AT VKM? ★



RESEARCH ORIENTED LEARNING



EXPERIENCED FACULTY



STRONG ACADEMIC FOUNDATION



ARCHIVAL & FIELD BASED EXPOSURE



HERITAGE & CULTURAL STUDIES FOCUS



WOMEN'S RESIDENTIAL CAMPUS

Join a department that builds critical thinkers, responsible citizens and future leaders through the study of History.

#### AREAS OF EXPERTISE

- Ancient Indian History
- Medieval Indian History
- Modern Indian History
- World History
- Gender & Women's History
- Social & Cultural History
- Intellectual History
- Historiography & Research Methodology
- Archives, Epigraphy & Museology
- Indian Ocean and Maritime Studies

#### PRIVILEGES OF BANARAS HINDU UNIVERSITY

- ✓ Access to BHU Central Library, one of the largest in Asia.
- ✓ Use of BHU Laboratories, Archives, Museums and Research Facilities.
- ✓ Opportunity to interact with eminent scholars and attend special lectures, seminars and workshops.
- ✓ Participation in BHU academic, cultural and co-curricular activities.
- ✓ Access to BHU health services and sports facilities.
- ✓ Opportunity for higher studies and research under BHU ecosystem.

#### LEARN FROM EXPERIENCED FACULTY

- Prof. Poonam Pandey
- Dr. Shashikesh Gond
- Dr. Sweta Singh
- Dr. Anuja Tripathi
- Ms. Raniti

#### WHY VKM?

- ✓ Rich Academic Legacy with focus on quality education
- ✓ Holistic Development through activities, seminars & workshops
- ✓ Safe, Inclusive & Empowering Environment for Women
- ✓ Strong Alumni Network that inspires and supports
- ✓ Well-Equipped Library & Digital Resources
- ✓ Experienced Mentorship & Guidance

#### ADMISSION OPEN

Step into the past to lead the future. Join M.A. History at VKM and become a thinker, researcher and change-maker.

- UGC & University Recognized Programme
- Research-Oriented & Career-Focused Curriculum
- Encouraging Critical Inquiry & Historical Perspective

#### APPLY NOW & BEGIN YOUR JOURNEY THROUGH TIME!

Platform for Leadership & Social Awareness

#### RESIDENTIAL FACILITY AVAILABLE

at The Theosophical Society Campus. Safe and supportive environment for female students.

#### ADMISSION THROUGH CUET-PG

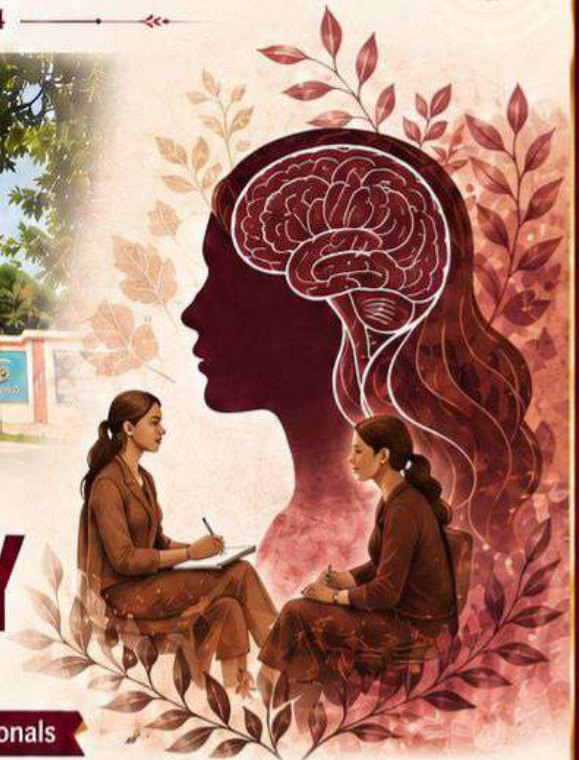
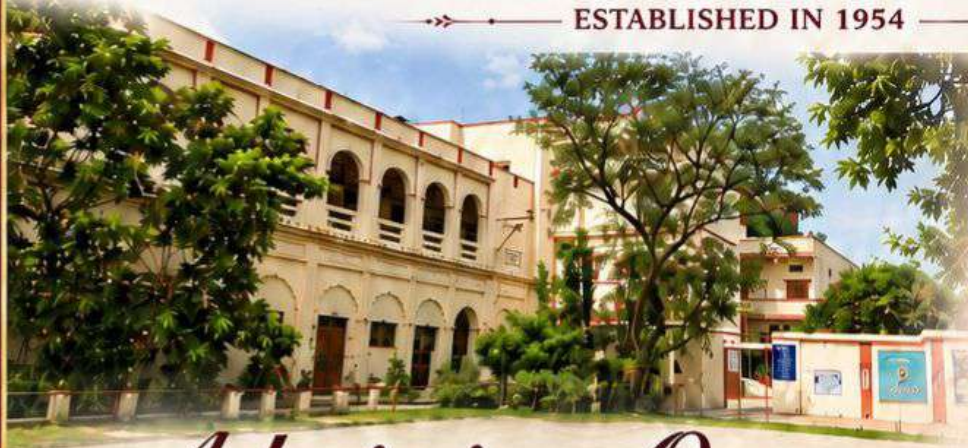
- Admission Information
- Follow the University Website

<https://bhu.ac.in>

VASANT KANYA MAHAVIDYALAYA (VKM)  
Kamachha, Varanasi - 221010

0542-2280025 | info@vkm.ac.in

Follow us: [www.vkm.ac.in](http://www.vkm.ac.in)



## Admissions Open M.A. PSYCHOLOGY (2026-27)

Preparing Future Educators, Researchers and Mental Health Professionals

### WHY CHOOSE PSYCHOLOGY AT VKM?



RESEARCH &  
EXPERIENTIAL LEARNING



LEARN FROM  
EXPERIENCED FACULTY



WIDE AREAS  
OF EXPERTISE



STRONG  
CAREER PATHWAYS



DISTINGUISHED  
ALUMNI NETWORK



RESIDENTIAL FACILITY  
FOR FEMALE STUDENTS



Join a department that combines academic excellence, practical training, research opportunities and holistic student development.



#### AREAS OF EXPERTISE

- |                           |                           |
|---------------------------|---------------------------|
| Clinical Psychology       | Cognitive Psychology      |
| Neuropsychology           | Developmental Psychology  |
| Social Psychology         | Positive Psychology       |
| Cross-Cultural Psychology | Indigenous Psychology     |
| Organisational Behaviour  | Human Resource Management |



#### RESEARCH & EXPERIENTIAL LEARNING

- ✓ State of the Art, Pedagogical techniques, ICT-enabled peer learning
- ✓ Experienced Faculty with Expertise across Diverse Areas of Psychology
- ✓ Seminars, Workshops and Expert Lectures
- ✓ Psychological Assessment and Practical Exposure
- ✓ Community Outreach and Mental Health Awareness Activities
- ✓ Internships and Professional Development Opportunities
- ✓ Advanced Postgraduate Training and Research
- ✓ Online courses available on Swayam portal
- ✓ Student-led Psychology Club Manaswini and e-Magazine



#### LEARN FROM EXPERIENCED FACULTY

- Prof. Shubhra Sinha
- Prof. Anju Lata Singh
- Dr. Ram Prasad Sonkar
- Dr. Khushboo Ashokkumar Mishra
- Dr. Shashi Prabha Kashyap



#### DISTINGUISHED ALUMNI

- Alumni serving as:
- Clinical Psychologists and Counsellors
  - Research Scholars and Research Associates
  - Assistant and Associate Professors
  - Corporate Leaders and HR Professionals
- Notable Alumni include professionals associated with DRP, AIIMS New Delhi, IGNOU Lucknow, IIT Jodhpur, BHU and other prestigious institutions.



#### CAREER PATHWAYS

- |                        |  |
|------------------------|--|
| Clinical Psychologist* | Human Resource Professional                |
| Counsellor*            | Behavioural Researcher                     |
| Research Associate     | NGO and Community Development Professional |
| Academician            | Doctoral Researcher (Ph.D.)                |

\*Subject to fulfillment of statutory professional requirements.



#### RESIDENTIAL FACILITY AVAILABLE In The Theopolaria Society Campus.

Safe and supportive environment for female students.



#### ADMISSION THROUGH CUET-PG

- Admission Information
- Follow the University Website

<https://bhucuetpg.samarth.edu.in/>



Explore Minds. Understand Humans. Create Impact.

EDUCATION | ENLIGHTENMENT | EMPOWERMENT

Manaswini  
The Psychology Club